



UniFi™

Enterprise WiFi System

Models: UAP, UAP-LR, UAP-PRO, UAP-AC
UAP-Outdoor, UAP-Outdoor5

**Unlimited Indoor/Outdoor AP Scalability in a
Unified Management System**

Breakthrough Speeds up to 1300 Mbps (802.11ac)

Intuitive UniFi Controller Software

**Hotspot Management – Customization and Built-In
Billing Options**



Scalable and Unified Enterprise WiFi Management

The UniFi Enterprise WiFi System is a scalable enterprise access point solution designed to be easily deployed and managed. UniFi Access Point (AP) indoor models have a sleek design and can be easily mounted to a ceiling tile or wall using the included mounting hardware. UniFi AP (UAP) outdoor models have a form factor built to last outdoors.

The UniFi Enterprise WiFi System includes the UniFi Controller software. The software installs on any PC or Mac within the network and is easily accessible through any standard web browser. Using the UniFi Controller software, an Enterprise WiFi network can be quickly configured and administered without any special training. Real-time status, automatic UAP device detection, map loading, and advanced security options are all seamlessly integrated.

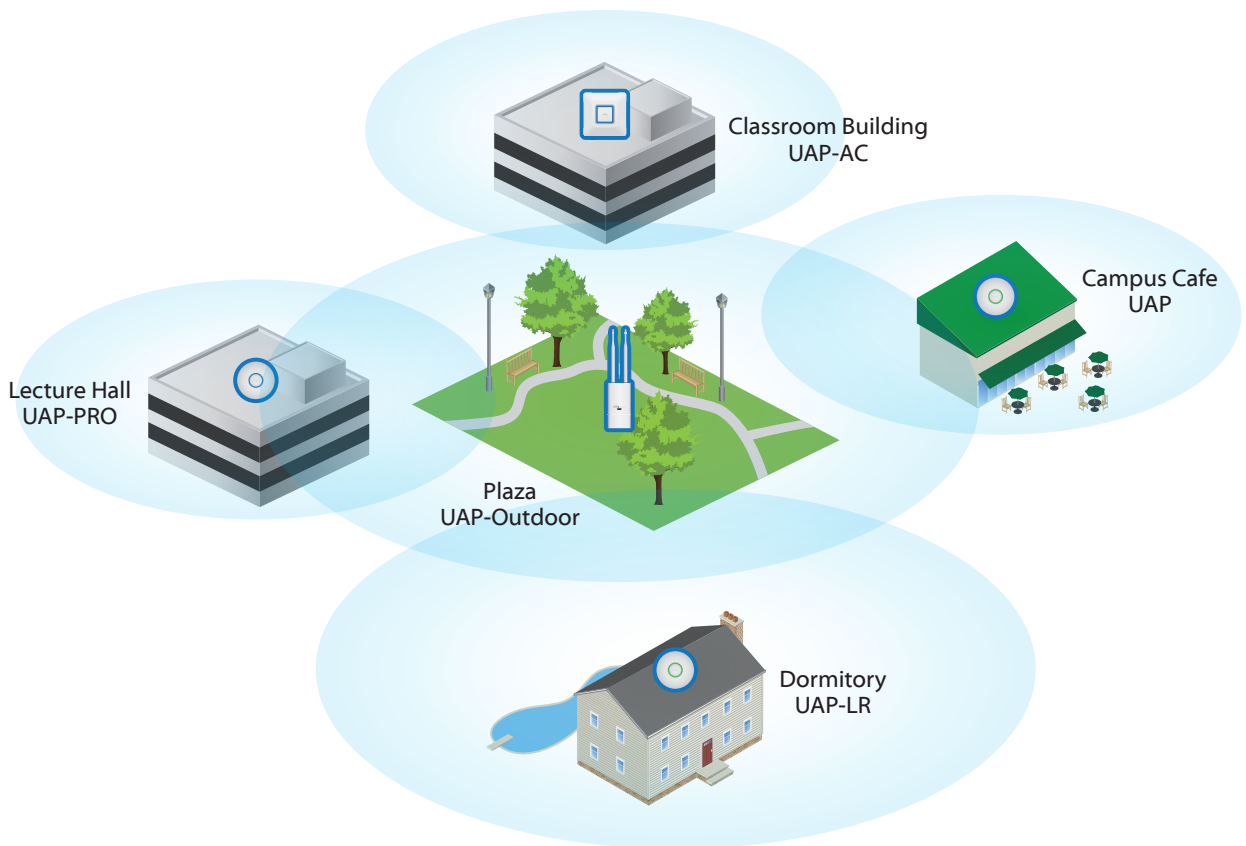
Features

Save money and save time Unlike traditional enterprise WiFi systems that utilize a hardware controller, UniFi comes bundled with a non-dedicated software controller that can be deployed on a PC/Mac, in a private cloud or using a public cloud service.

Powerful Hardware The fastest UniFi Access Point features the latest in WiFi 802.11ac MIMO technology – capable of gigabit speeds and ranges up to 400 ft. Other models feature WiFi 802.11n MIMO technology for superior performance in the 2.4 and/or 5 GHz bands.

Intuitive UniFi Controller Software Install, configure, and manage all of your UniFi APs with the intuitive and easy-to-learn UniFi Controller user interface.

Expandable Unlimited scalability. Build wireless networks as big or small as needed. Start with one (or upgrade to a three-pack) and expand to thousands while maintaining a single unified management system.



Example of Zero Handoff Roaming on a University Campus

With Ubiquiti's Zero Handoff Roaming, students keep their devices seamlessly connected as they move from the classroom through the plaza, to a cafe and then home to the dormitory.

UniFi Controller Software

Packed with Features

After the UniFi Controller software is installed on the premises or in a private or public cloud, the UniFi Controller can be accessed through any device using a web browser. The UniFi Controller allows the administrator to instantly provision thousands of UniFi APs, map out networks, quickly manage system traffic, and provision additional UniFi APs.

Zero Handoff Roaming

With Ubiquiti's Zero Handoff Roaming, mobile users can roam anywhere and seamlessly maintain their connections as they switch to the nearest AP. Zero Handoff Roaming makes multiple APs appear as a single AP, so it can work with any client and requires no interaction from the client device.

Multi-Site Management

A single UniFi Controller can manage multiple, distributed deployments and multi-tenancy for managed service providers. You can configure settings and administrator accounts specific to each deployment.

Detailed Analytics

Use the configurable reporting and analytics to manage large user populations and expedite faster troubleshooting.

WLAN Groups

The UniFi Controller can manage flexible configurations of large deployments. You can create multiple WLAN groups and assign them to an AP's radio.

Wireless Mesh

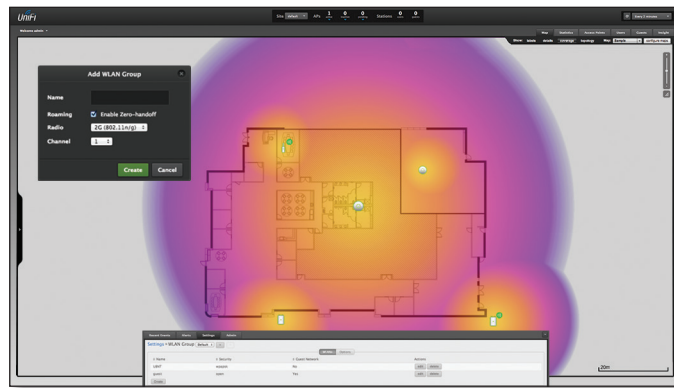
Wireless Mesh capability enables wireless connection between APs to extend range.

Guest Portal/Hotspot Support

Easy customization and advanced options for Guest Portals include authentication, Hotspot setup options, and the ability to run as an external portal server. Take advantage of UniFi's rate limiting for your Guest Portal and Hotspot package offerings. Apply different bandwidth rates (download/upload), limit total data usage, and limit duration of use.

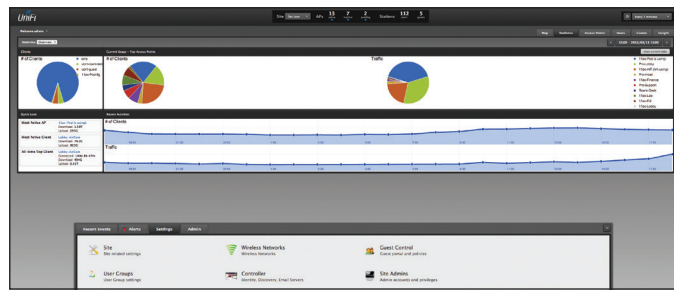
All UniFi APs include Hotspot functionality:

- Built-in support for billing integration using major credit cards.
- Built-in support for voucher-based authentication.
- Built-in Hotspot Manager for voucher creation, guest management, and payment refund.
- Full customization and branding of Hotspot portal pages.



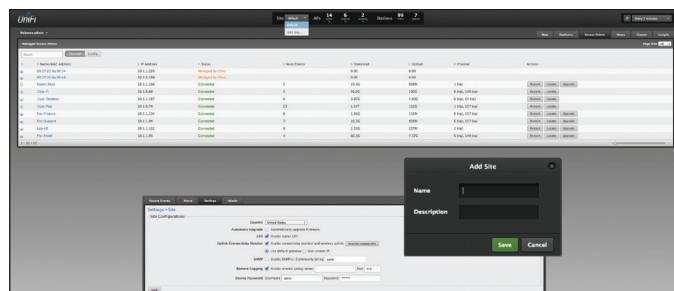
Maps

Upload map images of your location(s) for a visual representation of each wireless network.



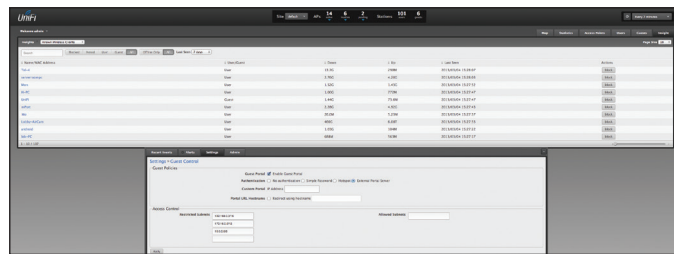
Statistics

UniFi organizes and visualizes network traffic in clear and easy-to-read graphs.



Access Points (APs)

Easily install, configure, and manage all APs from one location.



Insight

View *Known Wireless Clients*, *Rogue Access Points*, *Past Connections*, and *Past Guest Authorizations*.

Indoor Models

Features

Easy Mounting Sleek wall or ceiling mount design (all accessories included).

Design Aesthetic industrial design with a unique LED provisioning ring or square, which provides administrator location tracking and alerts for each device.

Power over Ethernet (PoE) Includes Power over Ethernet (PoE) functionality, which allows both power and data to be carried over a single Ethernet cable to the device.

Each UniFi model includes a Power over Ethernet adapter; however, it can also be powered by the Ubiquiti TOUGHSwitch PoE PRO (sold separately).



The UniFi AP-PRO is compatible with an 802.3af compliant switch, while the UniFi AP-AC is compatible with an 802.3at compliant switch.

UniFi indoor models are available in single-packs and three-packs.

Included:

- Wall and Ceiling Mount Adapter Kit
- Power over Ethernet Adapter
- UniFi Controller Software Installation CD

Indoor Model Comparison Chart

				
	UniFi AP (UAP)	UniFi AP-LR (UAP-LR)	UniFi AP-PRO (UAP-PRO)	UniFi AP-AC (UAP-AC)
2.4 GHz Speed*	300 Mbps	300 Mbps	450 Mbps	450 Mbps
5 GHz Speed*			300 Mbps	1300 Mbps
Range*	122 m (400 ft)	183 m (600 ft)	122 m (400 ft)	122 m (400 ft)
Secondary Ethernet Port			✓	✓
Gigabit Ethernet			✓	✓
Wi-Fi Standards	802.11 b/g/n	802.11 b/g/n	802.11 a/b/g/n	802.11 a/b/g/n/ac
2.4 GHz	✓	✓	✓	✓
5 GHz			✓	✓
Simultaneous Dual-Band			✓	✓
Ubiquiti PoE	✓	✓	✓	✓
802.3af or 802.3at Compliant			802.3af (PoE)	802.3at (PoE+)
Wall Mount	✓	✓	✓	✓
Ceiling Mount	✓	✓	✓	✓
Security Lock	✓	✓	✓	✓

* Speed and Range values may vary and are based on optimal environments.



UniFi AP-AC (UAP-AC)

The fastest UniFi model supports 802.11ac and speeds of up to 1300 Mbps in the 5 GHz radio band and up to 450 Mbps in the 2.4 GHz radio band. The UAP-AC offers simultaneous dual-band operation with 3x3 MIMO technology for each band. It has a range of up to 122 m (400 ft) and two Gigabit Ethernet ports.



UniFi AP-PRO (UAP-PRO)

The UniFi model supports speeds of up to 300 Mbps in the 5 GHz radio band and up to 450 Mbps in the 2.4 GHz radio band. The UAP-PRO offers simultaneous dual-band operation with 2x2 and 3x3 MIMO technology. It has a range of up to 122 m (400 ft) and two Gigabit Ethernet ports.



UniFi AP-Long Range (UAP-LR)

The UAP-LR has a longer range than the base model UAP with a range of up to 183 m (600 ft). It also offers 802.11n MIMO, with speeds of up to 300 Mbps.



UniFi AP (UAP)

This is our standard model 802.11n MIMO UniFi AP. It is capable of speeds up to 300 Mbps with a range of up to 122 m (400 ft).

Outdoor Models

All the same features packed in the indoor UniFi models, but in a form factor built to last outdoors.

Features

Easy Mounting Sleek wall or pole mount design (all accessories included).

Designed for the Great Outdoors The weather-resistant case is designed specifically for outdoor installations. Dual, omni-directional antennas provide for complete 360° wireless coverage.

2G or 5G Models Choose the frequency best suited to your environment – 2 GHz (UAP-Outdoor) or 5 GHz (UAP-Outdoor5). Both models offer astonishing range of up to 183 m (600 ft).

Power over Ethernet (PoE) Includes Power over Ethernet (PoE) functionality, which allows both power and data to be carried over a single Ethernet cable to the device.



Each UniFi model includes a Power over Ethernet adapter; however, it can also be powered by the Ubiquiti TOUGHSwitch PoE (sold separately).

UniFi outdoor models are available in single-packs.

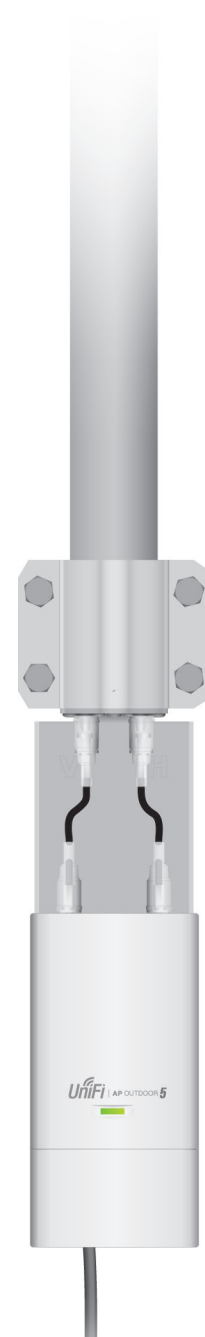
Included:

- External Antennas
- Wall and Pole Mount Kit
- Power over Ethernet Adapter
- UniFi Controller Software Installation CD

Outdoor Model Comparison Chart

	 UniFi AP-Outdoor (UAP-Outdoor)	 UniFi AP-Outdoor 5G (UAP-Outdoor5)
Speed*	300 Mbps	300 Mbps
Range*	183 m (600 ft)	183 m (600 ft)
Secondary Ethernet Port	✓	✓
Wi-Fi Standards	802.11 b/g/n	802.11 a/n
2.4 GHz	✓	
5 GHz		✓
Ubiquiti PoE	✓	✓
Wall Mount	✓	✓
Pole Mount	✓	✓
External Antennas	✓	✓

* Speed and Range values may vary and are based on optimal environments.



Installation Options External antennas are included. You can also connect the outdoor UniFi model to a dual-polarity antenna – an airMAX™ Sector or Omni Antenna – to increase gain.



UniFi AP-Outdoor (UAP-Outdoor)

Take UniFi outdoors and link farther than the standard UAP with the UAP-Outdoor. The UAP-Outdoor includes two external antennas and a secondary Ethernet port for bridging. It supports 802.11n MIMO, with speeds of up to 300 Mbps and a range of up to 183 m (600 ft).



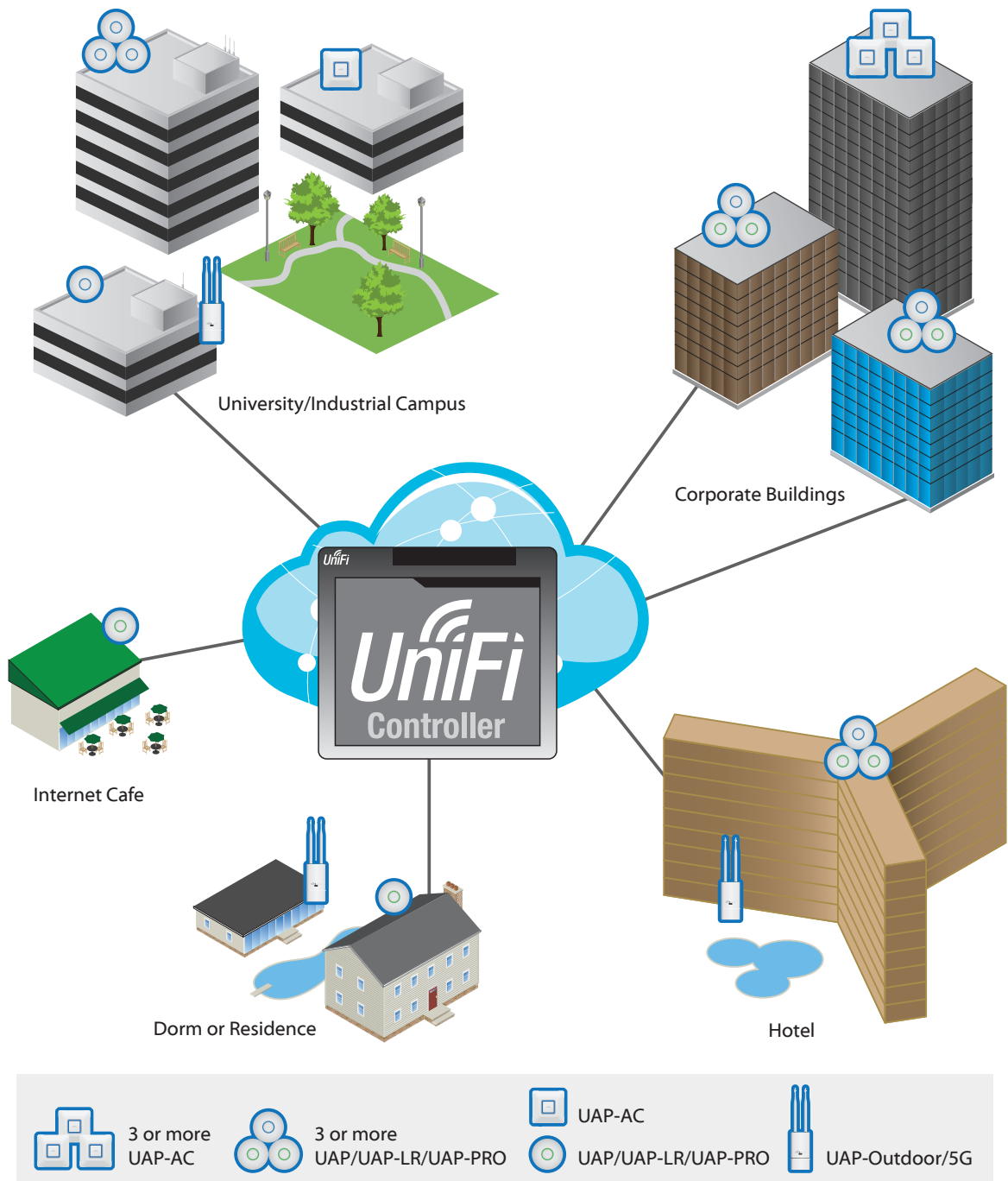
UniFi AP-Outdoor 5G (UAP-Outdoor5)

This outdoor model operates in the 5 GHz frequency spectrum. The UAP-Outdoor5 includes two external omni antennas and a secondary Ethernet port for bridging. It supports 802.11n MIMO, with speeds of up to 300 Mbps and a range of up to 183 m (600 ft).

Extend Your Coverage

With the UniFi Controller software running in a NOC or in the cloud, administrators can extend and centrally manage wide areas of indoor and outdoor coverage using any combination of UniFi APs.

Below are some examples of how UniFi APs can be deployed.



Multi-Site Management A single UniFi Controller running in the cloud manages multiple sites. Each site is logically separated and has its own configuration, maps, statistics, guest portal, and administrator read/write and read-only accounts.

Extend Wirelessly Take advantage of wireless downlinking. One wired UniFi AP uplink supports up to four wireless downlinks, allowing wireless adoption of devices in their default state and real-time changes to network topology.

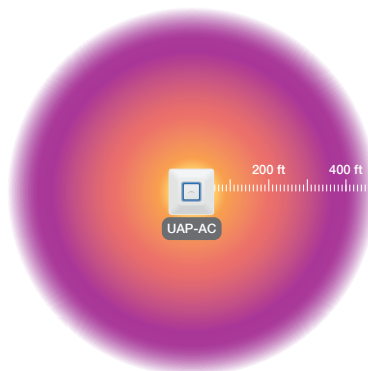
Manage Hotspots and Control Billing Use Hotspot Manager to customize portal login pages and bill customers using major credit cards. Or, use Hotspot Manager to set up a voucher-based authentication system for voucher creation, user administration, guest management, and payment refunds.

Specifications (UAP-AC)

UniFi AP-AC (UAP-AC)	
Dimensions	200 x 204 x 27 mm
Weight	508 g (566 g with Mounting Kits)
Networking Interface	(2) 10/100/1000 Ethernet Ports
Buttons	Reset
Wi-Fi Standards	802.11 a/b/g/n/ac
Power Method	Passive Power over Ethernet (48V), 802.3at Supported (Supported Voltage Range: 39 to 57VDC)
Power Supply	48V, 0.5A PoE Gigabit Adapter Included
Max. Power Consumption	22 W
BSSID	Up to Four per Radio
Power Save	Supported
Wireless Security	WEP, WPA-PSK, WPA-TKIP, WPA2 AES, 802.11i
Certifications	CE, FCC, IC
Mounting	Wall/Ceiling (Kits Included)
Operating Temperature	-10 to 55°C
Operating Humidity	5 - 80% Condensing
Antennas	
2.4 GHz	3 Integrated (Supports 3x3 MIMO with Spatial Diversity)
5 GHz	3 Integrated (Supports 3x3 MIMO with Spatial Diversity)
Max. TX Power	
2.4 GHz	28 dBm
5 GHz	28 dBm

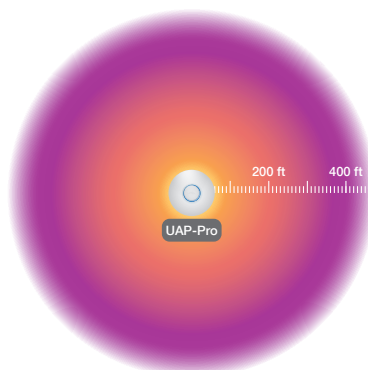
Advanced Traffic Management	
VLAN	802.1Q
Advanced QoS	Per-User Rate Limiting
Guest Traffic Isolation	Supported
WMM	Voice, Video, Best Effort, and Background
Concurrent Clients	200+

Supported Data Rates (Mbps)	
Standard	Data Rates
802.11a	6, 9, 12, 18, 24, 36, 48, 54 Mbps
802.11n, 2.4 GHz (3x3)	6.5 Mbps to 450 Mbps (MCS0 - MCS23, HT 20/40)
802.11n, 5 GHz (3x3)	6.5 Mbps to 450 Mbps (MCS0 - MCS23, HT 20/40)
802.11ac, 5 GHz (3x3)	6.5 Mbps to 1300 Mbps (MCS0 - MCS9 NSS1/2/3, VHT 20/40/80)
802.11b	1, 2, 5.5, 11 Mbps
802.11g	6, 9, 12, 18, 24, 36, 48, 54 Mbps



Specifications (UAP-PRO)

UniFi AP PRO	
Dimensions	200 x 200 x 36.5 mm
Weight	298 g (358 g with Mounting Kits)
Networking Interface	(2) 10/100/1000 Ethernet Ports
Buttons	Reset
Wi-Fi Standards	802.11 a/b/g/n
Power Method	Passive Power over Ethernet (48V), 802.3af Supported
Power Supply	48V, 0.5A PoE Adapter (Included)
Maximum Power Consumption	12 W
BSSID	Up to Four Per Radio
Power Save	Supported
Wireless Security	WEP, WPA-PSK, WPA-TKIP, WPA2 AES, 802.11i
Certifications	CE, FCC, IC
Mounting	Wall/Ceiling (Kits Included)
Operating Temperature	-10 to 70°C
Operating Humidity	5 - 80% Condensing
Antennas	
2.4 GHz	3 Integrated (Supports 3x3 MIMO with Spatial Diversity)
5 GHz	2 Integrated (Supports 2x2 MIMO with Spatial Diversity)
Max. TX Power	
2.4 GHz	30 dBm
5 GHz	22 dBm
Advanced Traffic Management	
VLAN	802.1Q
Advanced QoS	Per-User Rate Limiting
Guest traffic isolation	Supported
WMM	Voice, Video, Best Effort, and Background
Concurrent Clients	200+
Supported Data Rates (Mbps)	
Standards	Data Rates
802.11a	6, 9, 12, 18, 24, 36, 48, 54 Mbps
802.11n (2.4 GHz 3x3)	6.5 Mbps to 450 Mbps (MCS0 - MCS23, HT 20/40)
802.11n (5 GHz 2x2)	6.5 Mbps to 300 Mbps (MCS0 - MCS15, HT 20/40)
802.11b	1, 2, 5.5, 11 Mbps
802.11g	6, 9, 12, 18, 24, 36, 48, 54 Mbps



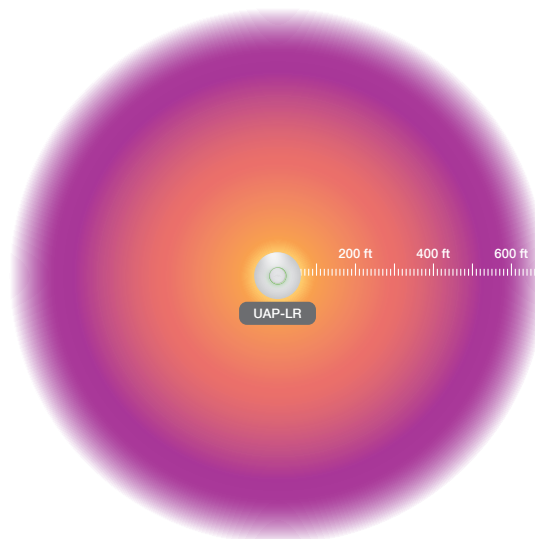
Specifications (UAP-LR)

UniFi AP Long-Range	
Dimensions	200 x 200 x 36.5 mm
Weight	290 g (430 g with Mounting Kits)
Networking Interface	(1) 10/100 Ethernet Port
Buttons	Reset
Antennas	2 Integrated (Supports 2x2 MIMO with Spatial Diversity)
Wi-Fi Standards	802.11 b/g/n*
Power Method	Passive Power over Ethernet (12-24V)
Power Supply	24V, 0.5A PoE Adapter Included
Maximum Power Consumption	6 W
Max TX Power	27 dBm
BSSID	Up to Four Per Radio
Power Save	Supported
Wireless Security	WEP, WPA-PSK, WPA-TKIP, WPA2 AES, 802.11i
Certifications	CE, FCC, IC
Mounting	Wall/Ceiling (Kits Included)
Operating Temperature	-10 to 70°C
Operating Humidity	5 - 80% Condensing

Advanced Traffic Management	
VLAN	802.1Q
Advanced QoS	Per-User Rate Limiting
Guest Traffic Isolation	Supported
WMM	Voice, Video, Best Effort, and Background
Concurrent Clients	100+

Supported Data Rates (Mbps)	
Standards	Data Rates
802.11n	6.5 Mbps to 300 Mbps (MCS0 - MCS15, HT 20/40)
802.11b	1, 2, 5.5, 11 Mbps
802.11g	6, 9, 12, 18, 24, 36, 48, 54 Mbps

* 2.4 GHz



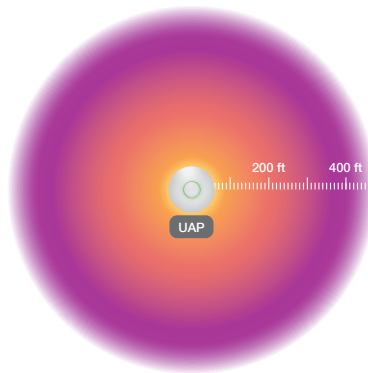
Specifications (UAP)

UniFi AP	
Dimensions	200 x 200 x 36.5 mm
Weight	290 g (430 g with Mounting Kits)
Networking Interface	(1) 10/100 Ethernet Port
Buttons	Reset
Antennas	2 Integrated (Supports 2x2 MIMO with Spatial Diversity)
Wi-Fi Standards	802.11 b/g/n*
Power Method	Passive Power over Ethernet (12-24V)
Power Supply	24V, 0.5A PoE Adapter Included
Maximum Power Consumption	4 W
Max TX Power	20 dBm
BSSID	Up to Four Per Radio
Power Save	Supported
Wireless Security	WEP, WPA-PSK, WPA-TKIP, WPA2 AES, 802.11i
Certifications	CE, FCC, IC
Mounting	Wall/Ceiling (Kits Included)
Operating Temperature	-10 to 70°C
Operating Humidity	5 - 80% Condensing

Advanced Traffic Management	
VLAN	802.1Q
Advanced QoS	Per-User Rate Limiting
Guest Traffic Isolation	Supported
WMM	Voice, Video, Best Effort, and Background
Concurrent Clients	100+

Supported Data Rates (Mbps)	
Standards	Data Rates
802.11n	6.5 Mbps to 300 Mbps (MCS0 - MCS15, HT 20/40)
802.11b	1, 2, 5.5, 11 Mbps
802.11g	6, 9, 12, 18, 24, 36, 48, 54 Mbps

* 2.4 GHz



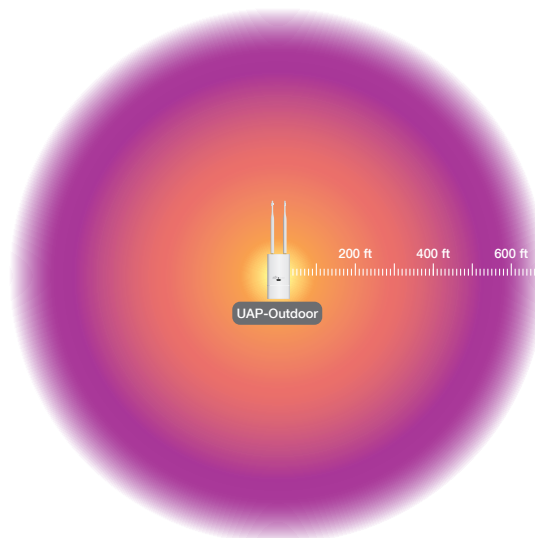
Specifications (UAP-Outdoor)

UniFi AP-Outdoor	
Dimensions	170 x 80 x 30 mm
Weight	230 g (without Antennas) 274 g (with Antennas)
Networking Interface	(2) 10/100 Ethernet Ports
Buttons	Reset
Antennas	(2) External 6 dBi Omni Antennas Included 191 mm (Length), 13 mm (Diameter)
Wi-Fi Standards	802.11 b/g/n*
Power Method	Passive Power over Ethernet (12-24V)
Power Supply	24V, 1A PoE Adapter Included
Maximum Power Consumption	4.6 W
Max TX Power	27 dBm
BSSID	Up to Four Per Radio
Power Save	Supported
Wireless Security	WEP, WPA-PSK, WPA-TKIP, WPA2 AES, 802.11i
Certifications	CE, FCC, IC
Mounting	Wall/Ceiling (Kits Included)
Operating Temperature	-30 to 75°C
Operating Humidity	5 - 95% Condensing

Advanced Traffic Management	
VLAN	802.1Q
Advanced QoS	Per-User Rate Limiting
Guest Traffic Isolation	Supported
WMM	Voice, Video, Best Effort, and Background
Concurrent Clients	100+

Supported Data Rates (Mbps)	
Standards	Data Rates
802.11n	6.5 Mbps to 300 Mbps (MCS0 - MCS15, HT 20/40)
802.11b	1, 2, 5.5, 11 Mbps
802.11g	6, 9, 12, 18, 24, 36, 48, 54 Mbps

* 2.4 GHz



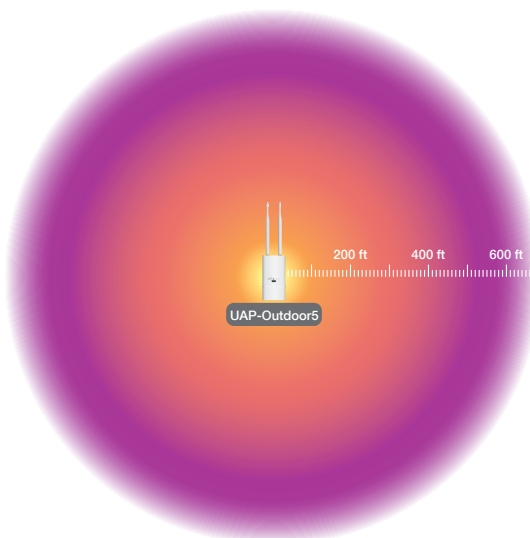
Specifications (UAP-Outdoor5)

UniFi AP-Outdoor 5G (UAP-Outdoor 5)	
Dimensions	170 x 80 x 30 mm
Weight	230 g (without Antennas) 274 g (with Antennas)
Networking Interface	(2) 10/100 Ethernet Ports
Buttons	Reset
Antennas	(2) External 6 dBi Omni Antennas Included 191 mm (Length), 13 mm (Diameter)
Wi-Fi Standards	802.11a/n*
Power Method	Passive Power over Ethernet (12-24V)
Power Supply	24V, 1A PoE Adapter Included
Max. Power Consumption	6.5 W
Max. TX Power	27 dBm
BSSID	Up to Four Per Radio
Power Save	Supported
Wireless Security	WEP, WPA-PSK, WPA-TKIP, WPA2 AES, 802.11i
Certifications	CE, FCC, IC
Mounting	Wall and Pole (Kits Included)
Operating Temperature	-30 to 75°C
Operating Humidity	5 to 95% Condensing

Advanced Traffic Management	
VLAN	802.1Q
Advanced QoS	Per-User Rate Limiting
Guest Traffic Isolation	Supported
WMM	Voice, Video, Best Effort, and Background
Concurrent Clients	100+

Supported Data Rates (Mbps)	
Standards	Data Rates
802.11a	6, 9, 12, 18, 24, 36, 48, 54 Mbps
802.11n	6.5 Mbps to 300 Mbps (MCS0 - MCS15, HT 20/40)

* 5 GHz



All specifications in this document are subject to change without notice.

© 2013 Ubiquiti Networks, Inc. All rights reserved.



www.ubnt.com

RRJL040313