

Category 6 UTP - Cabling System

AMP NETCONNECT Category 6 UTP Cabling System

... real Category 6 Performance, both on Component as well as on System level!

Owing to the extreme high performance of the AMP NETCONNECT Category 6 UTP cabling system, it is nowadays considered as one of the first **real un-shielded Category 6** cabling solution in the world market.

This system exceeds with a remarkable margin the latest requirements for Category 6 / Class E performance according to all international standards as ISO/IEC 11801 (2nd edition), EN 50173 (2002) and EIA/TIA 568.B. And this is valid for both, **the complete system performance and for the component performance.**



The essential innovation for this system is the development of **new high-end performing Modular Plugs and Jacks** which are currently the best performing unshielded RJ45 Connectors available. Together with the new cross-spacer design of the Category 6 UTP 4 pair cable, the system provides margins in all parameters. Moreover as all parts comply with all requirements also on a component level, installation becomes easier, faster, less sensitive and therefore finally very reliable.



The System supports all current applications up to Gigabit Ethernet (1000BaseT & 1000BaseTx) and of course as well all applications which are expected to be developed in future for Category 6 / Class E Cabling Solutions. But your benefit of this system is not only in the future – you have it today! As this system provides that enormous margin, it is less sensitive to external influences. This means that even your today's applications like Fast Ethernet or Gigabit Ethernet are running faster and more reliable, because the BER (Bit Error Rate) becomes zero based on the new AMP NETCONNECT UTP Category 6 System!

A performance – you would never have expected from an un-shielded cabling system!

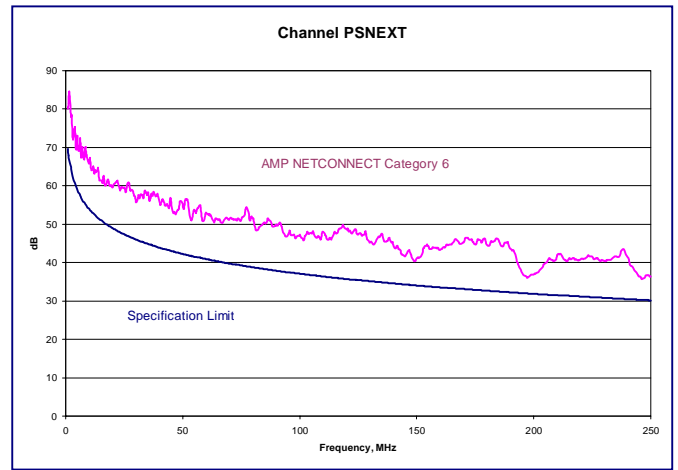
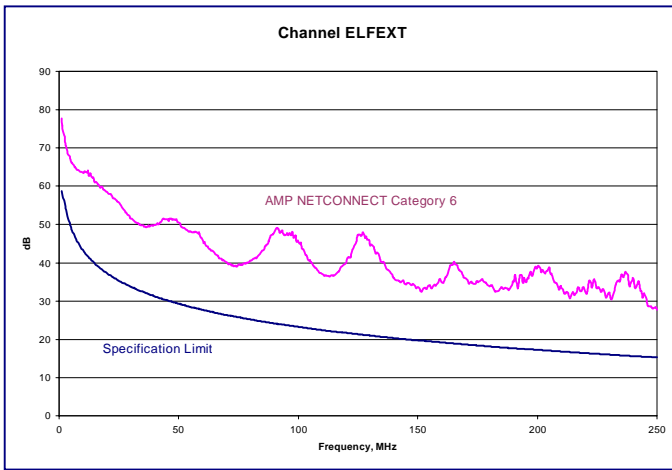
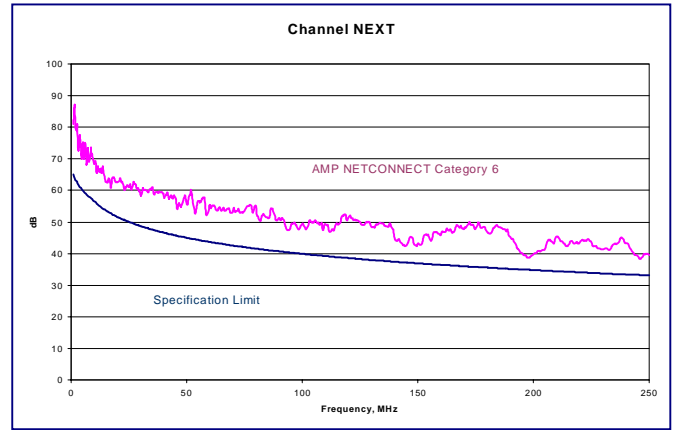
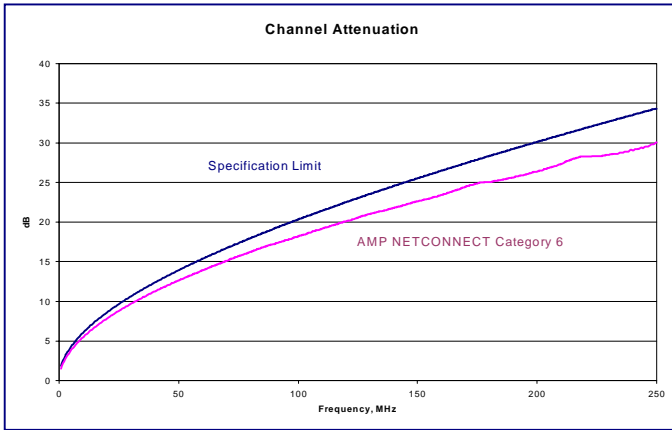
The new AMP NETCONNECT UTP Category 6 Cabling system was tested by the independent Intertek Test Services (ETL) and the results showed that the system exceeds all requirements according TIA/EIA-568-B.2-1 Draft 7a (Category 6) channel performance. In addition the system was tested per IEEE 802.3ab 1000BASE-T and achieved a Zero Bit Error Rate!

The following charts (see next page) provide a short overview about the test results – always for the **worst case** (which means the worst pair – typically the pair combination 36-XX) for the parameters:

- Attenuation
- Near End Cross Talk (NEXT)
- Power Sum NEXT (PSNEXT)
- Power Sum Equal Level Far End Cross Talk(PSELFEXT)

(Power Sum Parameters are especially important for multipair applications like Gigabit Ethernet)

Category 6 UTP - Cabling System



The AMP NETCONNECT Category 6 UTP Cabling System provides best possible margin for all the applications we have today and for the future as well!

New SlimLine (SL) Category 6 RJ45 Modular Jacks

In order to achieve real Category 6 performance, AMP NETCONNECT developed new RJ45 Modular Jacks. These new un-screened Jacks for UTP cable provide highest performance and a very compact SlimLine (SL) construction.

Product Facts:

- Real Category 6 component performance
- SlimLine (SL) construction for high density applications
- Universal Wiring (T568 A and T568 B)
- Fits in all SlimLine Outlets and Patchpanels
- Available in different colours
- Unique SL Termination Tool for guaranteed performance



Part Numbers:

| AMP PN | Description |
|-------------|---|
| 0-1375055-1 | Modular Jack, Cat.6 UTP,universal, almond |
| 0-1375055-2 | Modular Jack, Cat.6 UTP,universal, black |
| 0-1375055-3 | Modular Jack, Cat.6 UTP,universal, white |
| 0-1375055-6 | Modular Jack, Cat.6 UTP,universal, blue |
| 0-1375055-7 | Modular Jack, Cat.6 UTP,universal, red |
| 0-1375055-9 | Modular Jack, Cat.6 UTP,universal, green |

Category 6 UTP - Cabling System

Category 6 UTP Patchpanel

The new Category 6 UTP Panels incorporate in fact the new Category 6 Modular Jacks, which are snapped in 6 pack holders from the front. Therefore the panels have the same performance like the new Category 6 Modular Jacks. Moreover the individual ports of the panel can be terminated with released jacks from the front and afterwards snapped inside the panel. This provides easy, fast and reliable terminations.



Part Numbers:

| AMP PN | Description |
|-------------|--|
| 0-1375013-1 | 12 Port Panel, Cat.6 UTP, universal |
| 0-1375014-1 | 24 Port Panel, 19", 1U, Cat.6 UTP, universal |
| 0-1375015-1 | 48 Port Panel, 19", 2U, Cat.6 UTP, universal |
| 0-1375016-1 | 96 Port Panel, 19", 4U, Cat.6 UTP, universal |

Faceplates / Telecommunication Outlets

AMP NETCONNECT supports a wide range of Telecommunication Outlet versions existing in the market. Via the corresponding faceplates, the Category 6 SlimLine (SL) Jacks can be implemented in any kind of installation (surface mount, flush mount, channel mount)

(All faceplates are supplied without Jacks. Cat.6 Modular Jacks need to be ordered separately!)



| AMP PN | Description |
|-------------|--|
| y-0966224-1 | Dual DIN Faceplate (80x80) with front shutter |
| y-0966223-1 | Single DIN Faceplate (80x80) with front shutter |
| y-0336613-1 | 3-way DIN Faceplate (50x50) angled |
| y-0336614-1 | 3-way DIN Faceplate (50x50) angled + 80mm frame |
| 0-0183861-1 | 45x45 Faceplate, white (Mosaic style) |
| 0-0336793-1 | 45x45 Dual Faceplate, angled, white (Mosaic style) |
| 0-0346856-1 | 50x25 Faceplate, white |
| 0-0442112-1 | 86x86 Faceplate, Dual (British Style), white |
| 0-1339054-x | SlimLine Office Box, 2 Port |
| 0-1339057-x | SlimLine Office Box, 4 Port |
| 0-0183885-3 | 1 Port Office Box, white |
| 0-1479488-x | 2 Port Office Box |
| 0-1479489-x | 4 Port Office Box |

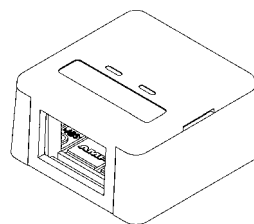
y denotes colour: 0: almond, 2: white
 x denotes colour: 1: almond, 3: white



3-way DIN Outlet
(Shown with 50x50 faceplate)



Office Box



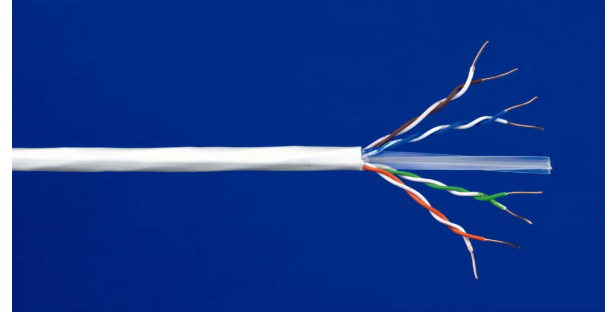
SlimLine (SL) Office Box (2 Port shown)

Category 6 UTP - Cabling System

Category 6 UTP Cable

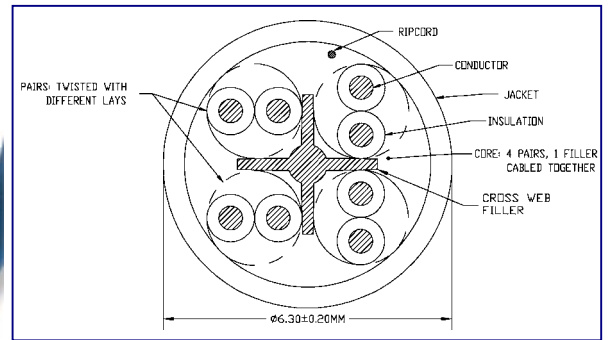
The AMP NETCONNECT Category 6 UTP Cable is an innovative cross-spacer design, which provides an improved NEXT performance by controlled separation of the twisted pairs at a very low attenuation at the same time. It is available with PVC or LSZH outer jacket.

The cable is manufactured in compliance with the highest levels of industry quality standards for longest term guaranteed reliability.



| AMP PN | Description |
|-------------|------------------------------|
| 0-0219584-2 | Cat.6 UTP Cable, PVC, white |
| 0-0219585-2 | Cat.6 UTP Cable, LSZH, white |

(Pack Unit: 305m Reel Box)



Category 6 UTP Patchcords

AMP NETCONNECT Category 6 patch cable assemblies exceed all requirements for Category 6 performance. This new range of Patchcords is terminated with a new developed Category 6 Modular Plug (RJ45). Patented AMP manufacturing techniques create consistent performance superior to standard cable assemblies. AMP Category 6 patch cable assemblies are manufactured using coloured stranded cable and matching coloured snagless boots.

| AMP PN | Description |
|-------------|----------------------------------|
| x-0219889-x | Patchcord, Category 6 UTP, white |
| x-0219884-x | Patchcord, Category 6 UTP, black |
| x-0219886-x | Patchcord, Category 6 UTP, blue |
| x-0219887-x | Patchcord, Category 6 UTP, green |
| x-0219888-x | Patchcord, Category 6 UTP, red |

| | | | | |
|-------------------|---------|-------|---------|-------|
| x denotes length: | 0-...-2 | 0.6 m | 1-...-2 | 3.7 m |
| | 0-...-4 | 1.2 m | 1-...-4 | 4.3 m |
| | 0-...-6 | 1.8 m | 1-...-6 | 4.9 m |
| | 0-...-8 | 2.4 m | 2-...-5 | 7.5 m |
| | 1-...-0 | 3.0 m | | |

Other lengths available upon request.

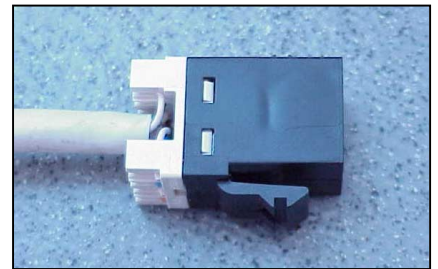
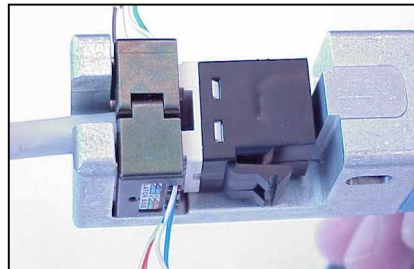
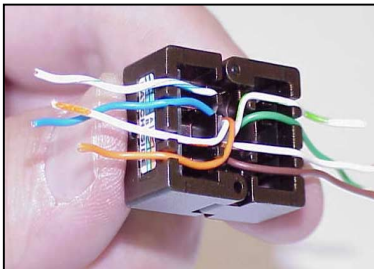


Category 6 UTP - Cabling System

The new AMP NETCONNECT Pistol Grip Termination Tool

The latest innovation in Termination Technology finally ensures reliable, high performance and high quality installations!

The new AMP NETCONNECT Pistol Grip Tool terminates a 4 pair Twisted Pair Cable in **one crimp cycle**. Compared to classical Punch-Down Tools, it results in **faster** but also **more reliable and repeatable** connections. The Cable Manager provides an easy way to prepare all wires for the termination by keeping **the shortest distance of untwist**, what is fundamental important especially for all Category 6 terminations. For that reason this new tool ensures perfectly real **high performance and high quality installations**.



Please see also Instruction Sheet No. 411-93001

Part Numbers:

- 0-0790187-1** Pistol Grip Handtool (including Cable Manager)
- 0-0790178-1** Cable Manager

AMP NETCONNECT provides you the warranty for the complete system

AMP NETCONNECT provides you a complete cabling system based on a more than **60 years experience in interconnection systems**. This means that all components of the AMP NETCONNECT Category 6 UTP Cabling System are designed together and perform together at the highest possible performance and reliability!

And for that reason, AMP NETCONNECT provides to you as the end user a **25 years warranty** for the complete cabling system, because we are sure that it performs within all specifications over that period of time.

Contact our competent NETCONNECT Partners or your next AMP NETCONNECT sales office. We will support you any time!

